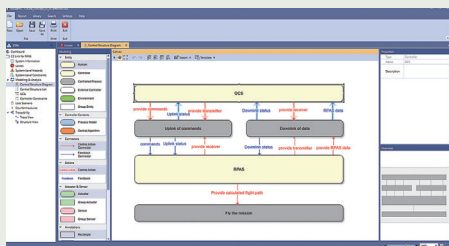


VisualPro

All-in-One Tool for Safety Security Analysis

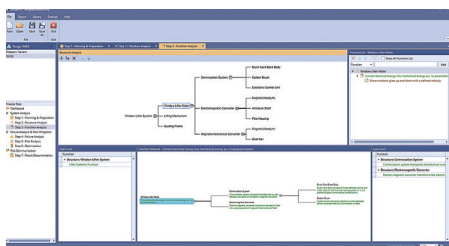
• Safety – STPA, FMEA, FTA, HARA



STPA* is extremely well-suited for identifying problems resulting from system interaction, human factors and emergent behavior.

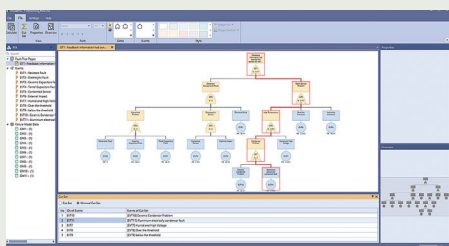
VisualPro deliver state-of-the-art tooling for STPA analysis

*STPA is a new analysis method developed by Professor Nancy Leveson from MIT, based on system theory



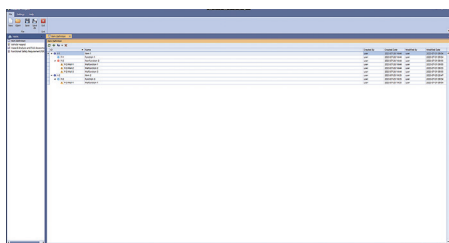
FMEA is a widely known and used safety analysis technique

VisualPro Supports AIAG-VDA FMEA, FMEA-MSR
Automatic AP calculation based on RPN and
Automatic generation of reports in Excel Format



FTA (Fault Tree Analysis)

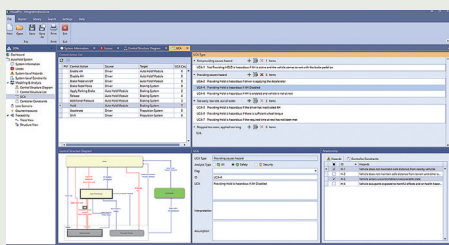
VisualPro Supports Failure Rate calculation
Effective Transfer Gate, and Cut Set Calculation.



HARA for Automotive is an essential part of Functional Safety analysis

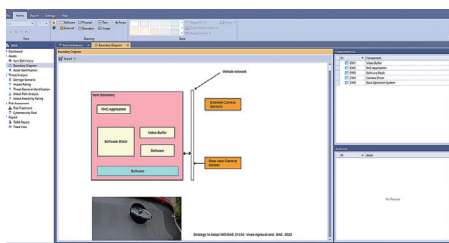
VisualPro Supports HARA steps to derive ASIL
Operational Situation Library, Excel reports

• Security – TARA, STPA-Sec



STPA-Sec is the use of STPA when applied to cybersecurity

VisualPro Supports STPA Security Analysis
STRIDE threat analysis, automatic report generation
And simultaneous analysis from a safety perspective



TARA is part of ISO 21434 for Automotive CSMS

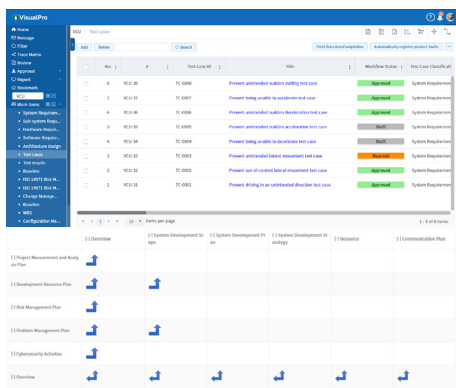
VisualPro Supports automatic Asset generation
based on Block Diagram
Automatic Impact Rating and Feasibility Rating calculation
And automatic generation of reports in Excel Format



Digital Requirements Management

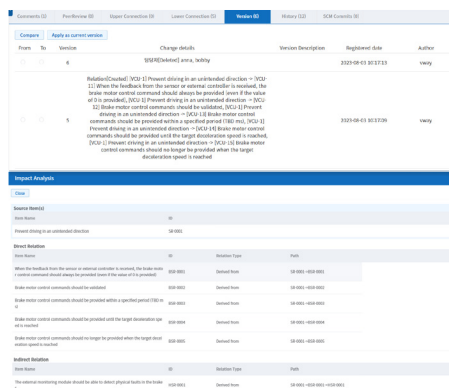
• End-to-End Lifecycle traceability with Requirements Management

Requirements Traceability



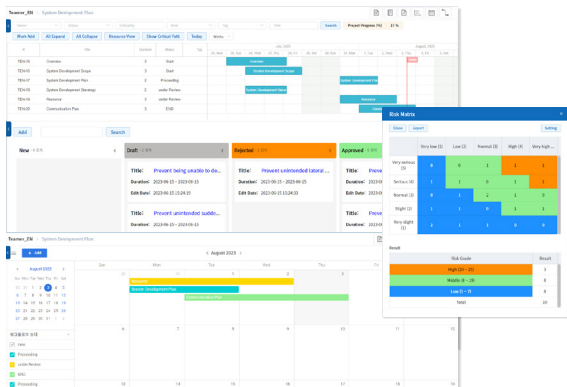
Teamer allows users to manage both traceability And the relationship matrix with ease and with maximum efficiency.

Change Management / Impact Analysis



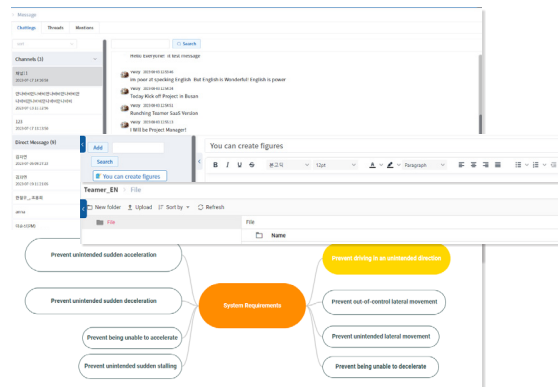
Teamer offers impact analysis capabilities, allowing users to understand in advance the scale or impact due to suggested changes.

Project Management



Teamer provides a visualized project overview, incorporating task, schedule, and resource management using tools such as Gantt Charts, Kanban, and Calendars. It also includes risk and issue management features

Collaboration



Teamer allows users to easily work together and capture design decision context with all relevant internal and external stakeholders.

It's 'Slack'like interface has message/Wiki/Share/ Mindmap

• Expected Effect

